

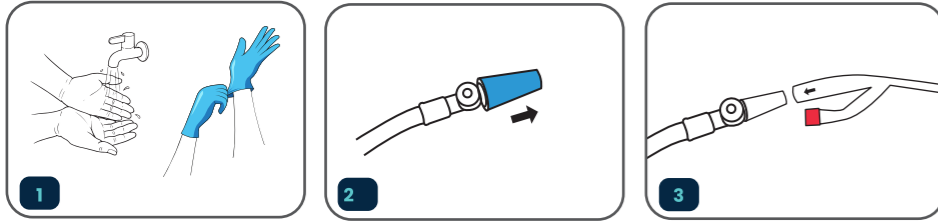


BEDSIDE URINARY DRAINAGE BAG

LVA3079

QUICK START GUIDE

ATTACHING THE BAG

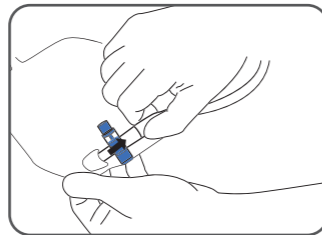


1. Wash hands, put on gloves.
2. Remove protective cap from night drainage bag.
3. Insert bedside bag connector firmly to the catheter valve directly. *Valve must always be single use and sterile.*
4. Remove leg straps or bag support device to allow free drainage.
5. Open tap between leg bag or valve, and appropriate night drainage bag.
6. Place bedside drainage bag on a supporting stand so the bag is positioned lower than the bladder to aid drainage.
7. Never let the catheter be pulled by the drainage bags.

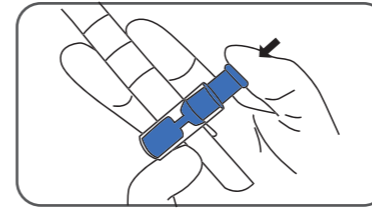
EMPTYING THE BAG

**** Before removing spout make sure clamp is closed (tube is being blocked)** Remove the drainage spout from its respective pocket on the bag.**

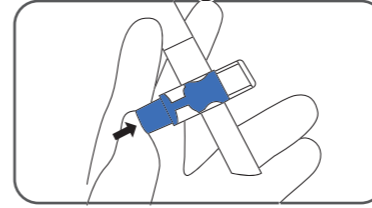
1. ****Before opening spout make sure it is facing downwards and into a suitable receptacle**** Press the side of the clamp protruding the most so that the clamp moves and the tube is no longer being blocked.



2. Close the spout by pushing the opposite side pressed before to open. ****The tube should be being blocked****



3. Place the spout back into its respective pocket on the bag.



DISCONNECTING THE BAG

1. Wash hands, put on gloves.
2. Close tap on leg bag or valve.
3. Disconnect night drainage bag from leg bag or valve if worn.
4. Empty urine from bag and discard as instructed by your Healthcare Professional (See below).

INTENDED USE

To collect and store urine for patients requiring urinary drainage, typically in a bedridden or limited mobility setting.

INDICATIONS

- Post-surgical recovery requiring urinary drainage.
- Conditions causing urinary incontinence.
- Long-term urinary catheterization.
- Patients with limited mobility or bedridden status.
- Management of chronic bladder dysfunction.
- Situations requiring accurate urine output monitoring.

CONTRAINDICATIONS

- Hypersensitivity or allergies to any materials used in the product.
- Patients with contraindications for urinary catheterization as advised by a medical professional.

PRECAUTIONS

READ INSTRUCTIONS BEFORE USE.

- Ensure proper training in the use and application of the urinary drainage bag before operation.
- Follow healthcare provider instructions for proper catheter and bag usage.
- Regularly monitor the device for leakage, blockage, or damage.
- Consult a licensed healthcare professional before use if you have a serious medical condition.
- Ensure that the drainage bag is securely connected to the catheter and that the outlet valve is closed when not in use.

CARE INSTRUCTIONS

- Empty the bag when it is no more than two-thirds full to prevent backflow or strain on the catheter.
- Clean the outlet valve and bag surface with a mild disinfectant as recommended.
- Single-use only—dispose of the bag after use.
- DO NOT reuse, autoclave, or sterilize.

MATERIALS

- Medical-Grade PVC
- NOT MADE WITH NATURAL RUBBER LATEX



DISPOSAL

- Dispose of the product in accordance with local healthcare waste regulations. Do not flush into sewage systems.

IMPORTANT SAFETY NOTICE

If you experience any serious incident related to the use of this device, immediately discontinue use and report it to:

1. The manufacturer: Vive Health
2. Contact your national health authority
3. Your healthcare provider

A serious incident is any incident that directly or indirectly led, might have led, or might lead to:

- Death of a patient, user, or other person
- Temporary or permanent serious deterioration of health
- A serious public health threat

For non-serious concerns, contact Vive Health customer service:
service@vivehealth.com
1-800-487-3808
vivehealth.com

Distributed by

